

Madison, Wisconsin

CITY OF MADISON

CITY ENGINEERING DIVISION
DEPARTMENT OF PUBLIC WORKS
PLAN OF PROPOSED IMPROVEMENT

WILLOW CREEK STORMWATER TREATMENT (TREE REMOVAL)

PUBLIC IMPROVEMENT PROJECT
APPROVED

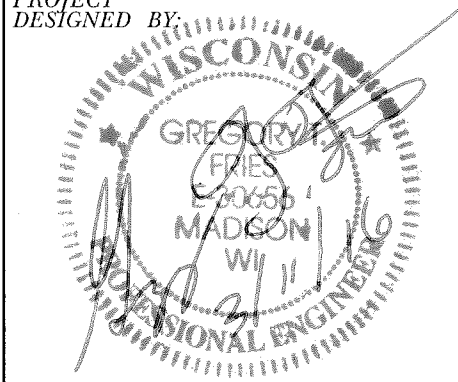
MARCH 1, 2016

BY THE COMMON COUNCIL
OF MADISON, WISCONSIN

PUBLIC IMPROVEMENT DESIGN
APPROVED BY:

 3/14/16
City Engineer Date

PROJECT
DESIGNED BY:



INDEX OF SHEETS

SHEET NO.	TITLE
1	PLAN
2	PLAN



PLOT SCALE: _____

PLOT NAME: _____

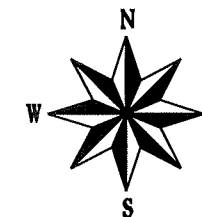
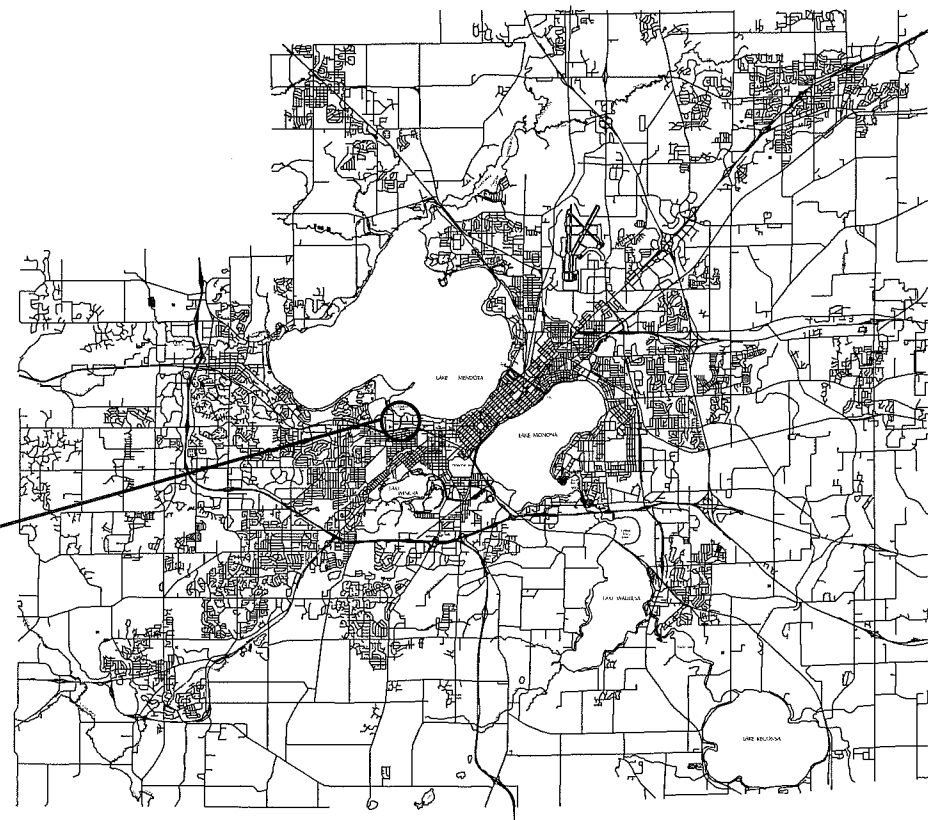
REV. DATE: _____

ORIGINATOR: CITY OF MADISON - STREETS DIVISION

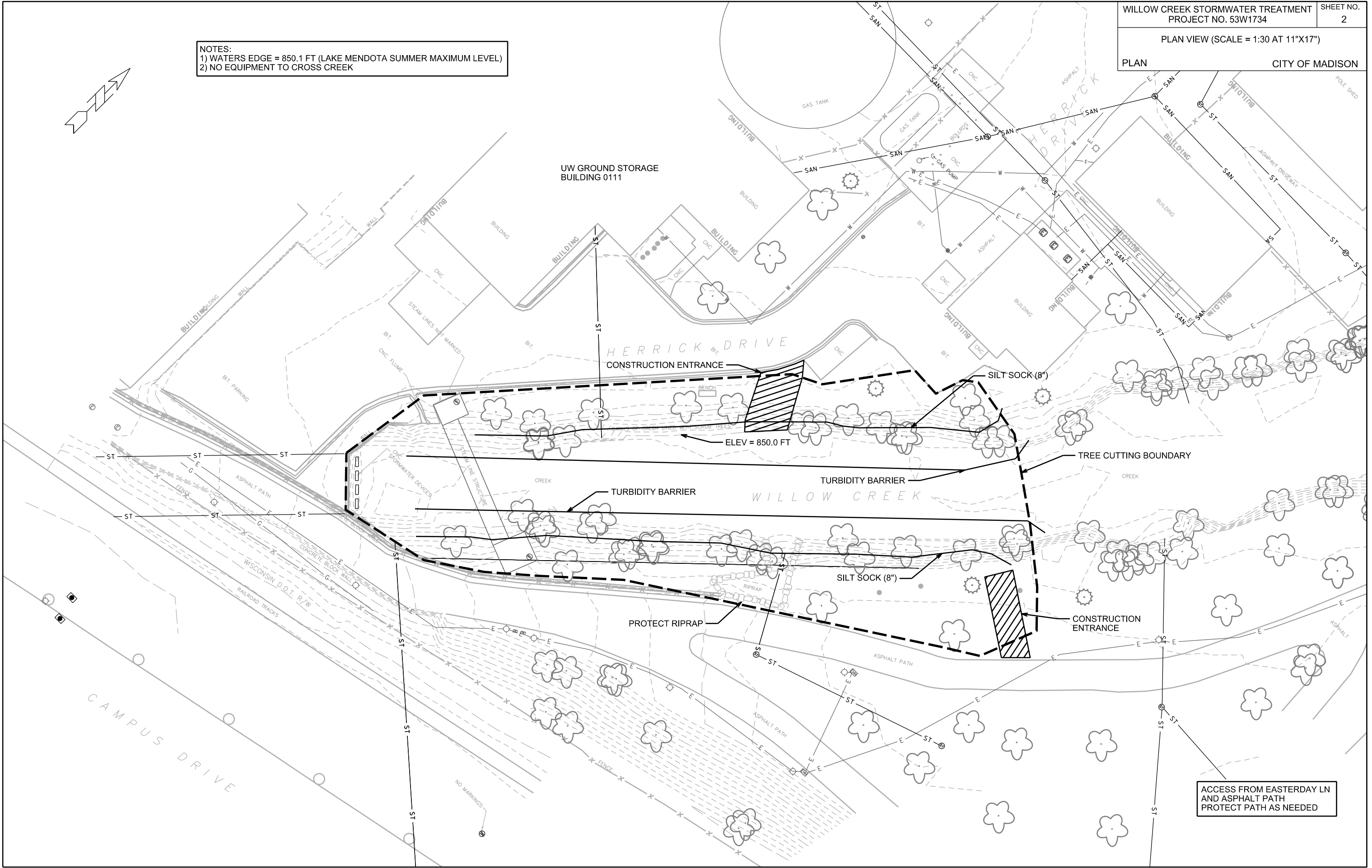
CITY PROJECT NO. 53WI734

CONVENTIONAL SIGNS	
FIELD VERIFY ALL UTILITY LOCATIONS	
GAS	— G —
STORM SEWER	— ST —
SANITARY SEWER	— SAN —
WATER	— W —
OVERHEAD ELECTRIC	— OH —
POWER POLE	□
HANDICAP RAMP	
COMBUSTIBLE FLUIDS	

PROJECT
LOCATION



NOTES:
 1) WATERS EDGE = 850.1 FT (LAKE MENDOTA SUMMER MAXIMUM LEVEL)
 2) NO EQUIPMENT TO CROSS CREEK



ACCESS FROM EASTERDAY LN AND ASPHALT PATH PROTECT PATH AS NEEDED

PLOT SCALE: _____
 PLOT NAME: _____
 REV. DATE: _____
 ORIGINATOR: CITY OF MADISON, STREETS DIVISION